



CERTIFICATE OF ANALYSIS

20 Martin Ross Avenue, North York, ON, M3J 2K8, CANADA
Tel: (416) 665-9696, Fax: (416) 665-4439
Email: orders.trc@lscgroup.com Website: www.trc-canada.com

1. Identification

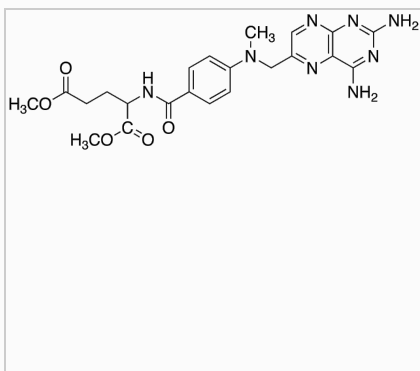
Catalogue Number: M260685

CAS Number: 34378-65-9

Product: Methotrexate Dimethyl Ester

Synonym: N-[4-[(2,4-Diamino-6-pteridiny)methyl]methylamino]benzoyl]-L-glutamic Acid Dimethyl Ester; Dimethyl Methotrexate; EP Methotrexate Impurity D; Methotrexate EP Impurity J

Structure:



Molecular Formula:

C₂₂H₂₆N₈O₅

Molecular weight:

482.49

Source of Product:

Synthetic

Solubility:

DMSO (Slightly), Methanol (Slightly, Sonicated)

Lot Number: 7-SWZ-72-1

Purity: 97%

Shipping Condition: This Product Is Stable To Be Shipped At Room Temperature

Storage Condition: -20°C

2. Warning

Warning 1:

Warning 2:

Warning 3:

3. Analytical Information

| Tests: | Specifications: | Results: |
|--------------------|--------------------------------|-----------------------------------|
| Appearance | Light Yellow to Dark Red Solid | Light Yellow Solid |
| NMR | Conforms to Structure | Conforms |
| HPLC Purity | Report Result | 98.96% (305 nm) |
| MS | Conforms to Structure | Conforms |
| Elemental Analysis | Conforms | %C: 51.58, %H: 5.54, %N: 21.77 |
| Water Content | Report Result | ~3.9% based on Elemental Analysis |

Additional Information: N/A

Purity is based on the analytical results of the tests performed. NMR and Elemental Analysis (if available) may have an accuracy of ± 2%. Isotopic purity is based on mass distribution observed. The contents of the specifications are subject to change without advance notice, and the specification values displayed here are the most up to date values.

4. Signatures

| Reviewed By | Reviewed By | C of A Approved By | Test Date | Retest Date |
|-------------|---------------|--------------------|-----------|-------------|
| Henry Tieu | Toni Rantanen | Chanell Chu | 11/4/2021 | 11/2/2031 |